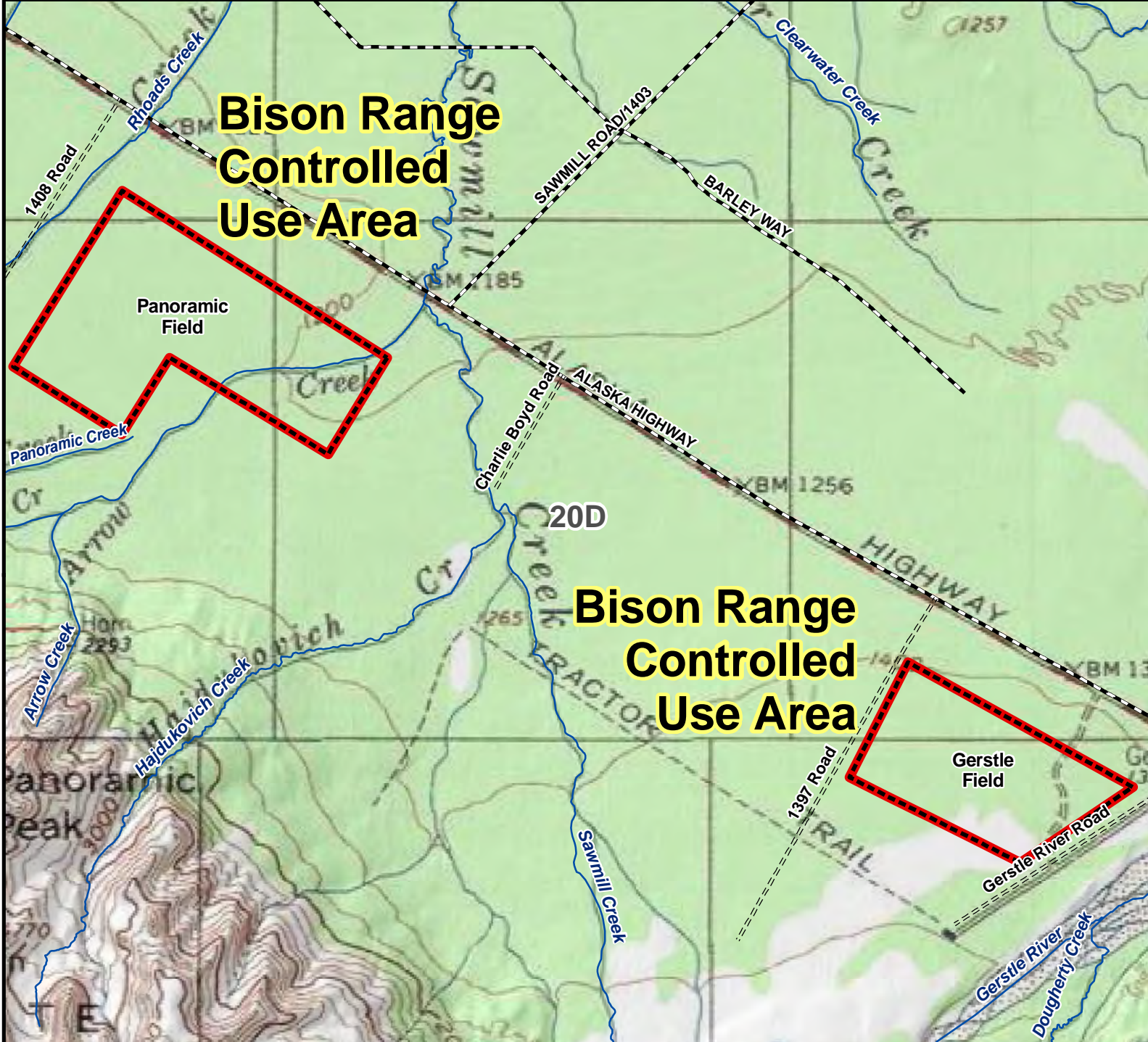


# Unit 20D Bison Range Controlled Use Area

This map is intended for hunt planning use, not for determining legal property or regulatory boundaries. Content is compiled from various sources and is subject to change without notice. See current hunting regulations for written descriptions of boundaries. Hunters are responsible for knowing the land ownership and regulations of the areas they intend to hunt.



**AREA DESCRIPTION:** Unit 20D, the area consists of two field complexes within the Delta Junction Bison Range in Unit 20D as follows: (i) the Panoramic Field hunting area is located three-quarters of a mile south of the Alaska Highway between Milepost 1404.0 and 1407.6, and bounded by a line beginning at the northeast corner (63° 53.299' N. lat., 145° 14.714' W. long.), then northwest 3.5 miles to 63° 54.956' N. lat., 145° 20.767' W. long., then southwest 2.4 miles to 63° 53.206' N. lat., 145° 23.232' W. long., then southeast 1.5 miles to 63° 52.537' N. lat., 145° 20.758' W. long., then northeast 1.0 mile to 63° 53.301' N. lat., 145° 19.659' W. long., then southeast 2.0 miles to 63° 52.330' N. lat., 145° 16.075' W. long., then northeast 1.0 miles to the beginning point; and (ii) the Gerstle Field hunting area is located three-quarters of a mile south of the Alaska Highway between Milepost 1394.1 and 1396.8, and bounded by a line beginning at the northeast corner (63° 48.984' N. lat., 144° 57.766' W. long.), then northwest 2.9 miles to 63° 50.242' N. lat., 145° 02.874' W. long., then southwest 1.1 miles to 63° 49.102' N. lat., 145° 04.197' W. long., then southeast 2.3 miles to 63° 48.239' N. lat., 145° 00.339' W. long., then northeast 1.6 miles to the beginning point.

The area is open to moose hunting by drawing permit only; the department may issue a permit to a child, as follows: (i) the permit may be issued to a child aged 10 to 17 who will be accompanied in the field by an adult 21 years of age or older, with the child being the permittee; (ii) a moose harvested under a permit issued under this section will count against the bag limits of both the child and accompanying adult; (iii) only the child may shoot a moose, except that the accompanying adult may shoot the animal only to prevent the animal from escaping after having been wounded by the child; (iv) in addition to the permit specified in this section, the child and accompanying adult must have the licenses, harvest tickets, and tags required under this title and AS 16 in possession while in the field. The area is closed to motorized vehicles for hunting from July 1 through September 30, including the transportation of hunters, hunting gear, or parts of game in the management area.

0 0.75 1.5 3 Miles

- Controlled Use Area
- Subunit Boundary
- Closed Area
- Management Area
- National Park/Monument
- National Wildlife Refuge
- Military Closure
- Other State Areas
- Closed to Hunting