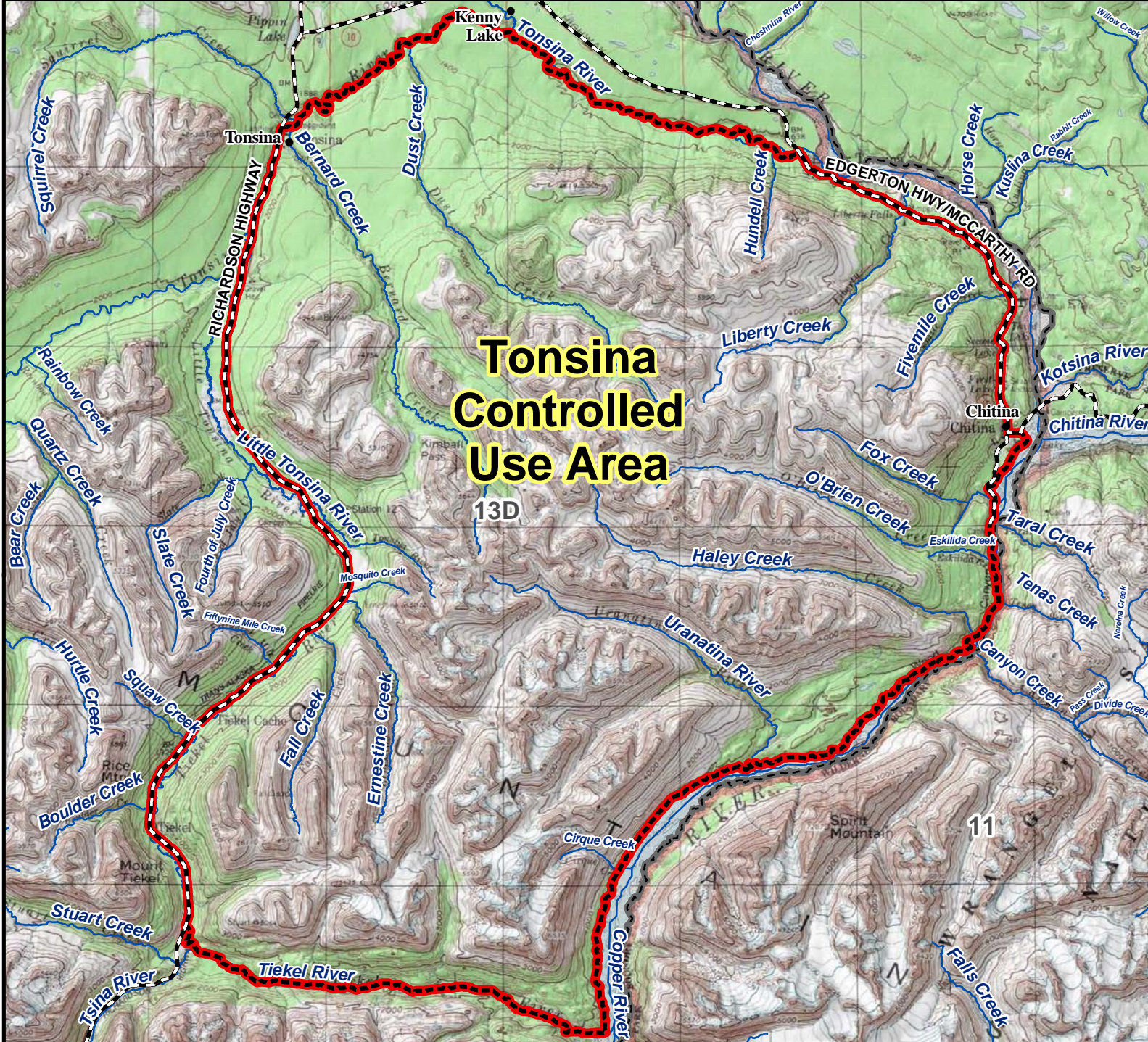


# Unit 13D Tonsina Controlled Use Area



**Tonsina  
Controlled  
Use Area**

**AREA DESCRIPTION:** Unit 13D, the area consists of that portion of Unit 13D bounded on the west by the Richardson Highway from the Tielke River to the Tonsina River at Tonsina, on the north along the south bank of the Tonsina River to where the Edgerton Highway crosses the Tonsina River, then along the Edgerton Highway to Chitina, on the east by the Copper River from Chitina to the Tielke River, and on the south by the north bank of the Tielke River.

The area is closed to the use of any motorized vehicle or pack animal for hunting, including the transportation of hunters, their hunting gear, or parts of game, from July 26 through September 30.

**Reason for the Special Area**

This controlled use area was created in 1975 to provide an area where walk-in sheep hunters had a reasonable opportunity to take mature rams. Because this area is bounded by roads, restrictions on transportation types were necessary in order to reduce the sheep harvest enough to allow rams to mature. Rams in this area, when allowed to mature, have fairly large horns with good bases. The Tonsina Controlled Use Area is a difficult area to hunt because of the long hike to get to good sheep country, however, it is popular among sheep hunters.

